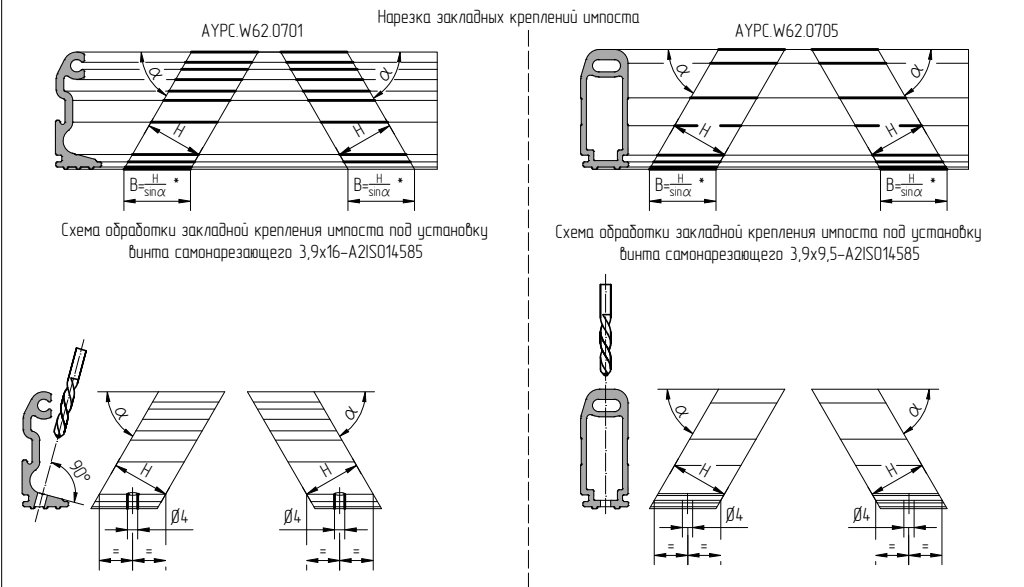
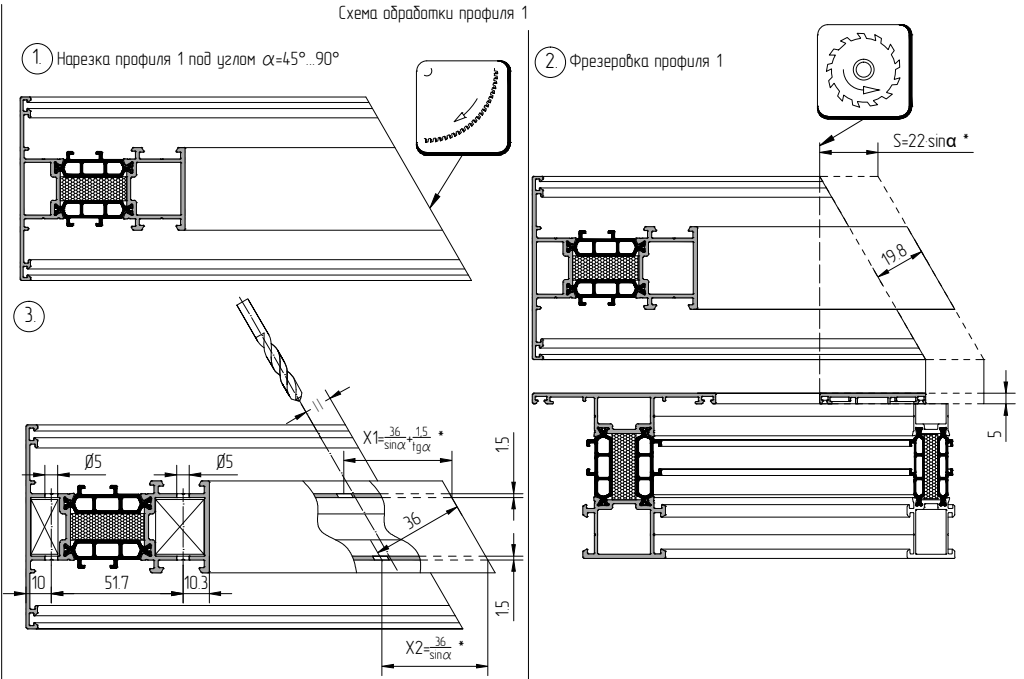


| Профиль 1 | H, мм | Вспомогательные размеры, мм | Угол α | | | | | | | | | |
|---|-------|--|--------|------|------|------|------|------|------|------|------|------|
| | | | 45° | 50° | 55° | 60° | 65° | 70° | 75° | 80° | 85° | 90° |
| АУРС W72.0101 АУРС W72.0121 АУРС W72.0301 | 13 | $B = \frac{H}{\sin \alpha}$ | 18.4 | 17.0 | 15.9 | 15.0 | 14.3 | 13.8 | 13.5 | 13.2 | 13.0 | 13.0 |
| | | $S = 22 \sin \alpha$ | 15.6 | 16.9 | 18.0 | 19.1 | 19.9 | 20.7 | 21.3 | 21.7 | 21.9 | 22.0 |
| | | $X1 = \frac{36 \cdot 15}{\sin \alpha \cdot 19 \alpha}$ | 52.4 | 48.3 | 45.0 | 42.4 | 40.4 | 38.9 | 37.7 | 36.8 | 36.3 | 36.0 |
| | | $X2 = \frac{36}{\sin \alpha}$ | 50.9 | 47.0 | 43.9 | 41.6 | 39.7 | 38.3 | 37.3 | 36.6 | 36.1 | 36.0 |
| АУРС W72.0102 АУРС W72.0122 АУРС W72.0302 | 22.6 | $B = \frac{H}{\sin \alpha}$ | 32.0 | 29.5 | 27.6 | 26.1 | 24.9 | 24.1 | 23.4 | 22.9 | 22.7 | 22.6 |
| | | $S = 22 \sin \alpha$ | 15.6 | 16.9 | 18.0 | 19.1 | 19.9 | 20.7 | 21.3 | 21.7 | 21.9 | 22.0 |
| | | $X1 = \frac{36 \cdot 15}{\sin \alpha \cdot 19 \alpha}$ | 52.4 | 48.3 | 45.0 | 42.4 | 40.4 | 38.9 | 37.7 | 36.8 | 36.3 | 36.0 |
| | | $X2 = \frac{36}{\sin \alpha}$ | 50.9 | 47.0 | 43.9 | 41.6 | 39.7 | 38.3 | 37.3 | 36.6 | 36.1 | 36.0 |
| АУРС W72.0103 АУРС W72.0123 АУРС W72.0303 | 36.2 | $B = \frac{H}{\sin \alpha}$ | 51.2 | 47.3 | 44.2 | 41.8 | 39.9 | 38.5 | 37.5 | 36.8 | 36.3 | 36.2 |
| | | $S = 22 \sin \alpha$ | 15.6 | 16.9 | 18.0 | 19.1 | 19.9 | 20.7 | 21.3 | 21.7 | 21.9 | 22.0 |
| | | $X1 = \frac{36 \cdot 15}{\sin \alpha \cdot 19 \alpha}$ | 52.4 | 48.3 | 45.0 | 42.4 | 40.4 | 38.9 | 37.7 | 36.8 | 36.3 | 36.0 |
| | | $X2 = \frac{36}{\sin \alpha}$ | 50.9 | 47.0 | 43.9 | 41.6 | 39.7 | 38.3 | 37.3 | 36.6 | 36.1 | 36.0 |



* Значения размеров для типовых углов приведены в таблице.